

Receiver Gauge

Model. DS-1080 Series

DAESHIN

Summary

DS-1080 Series는 공기압 전송식의 압력, 차압, 유량, 용량을 측정하는 각종 수신계로 쓰여지며 고정도, 고감도의 부르동관을 Element로 사용하고 있습니다.
각종 공기압 전송기, 컨트롤 밸브(열림,단힘)량을 체크하는 곳에 쓰여지고 있습니다.

Diameter

100, 150 mm

Accuracy

100,150mm : $\pm 1.0\%$ of Full Scale

Scale Range

Linear Scale : 0 ~ 100%

Square Root Scale : 0 ~ 10 Root

Working Pressure

정압력 : 75% of Full Scale

변동압력 : 60% of Full Scale

Working Temperature

기체 : -20 ~ 65°C

유체 : -20 ~ 80°C



Model. DS-1081

Standard features

Pressure connection

STS 316

Element

STS 304, STS 316

C Type Bourdon Tube

Case

STS 304

Cover

STS 304

Slip-on-Fit

Window

Safety Glass

Movement

STS 304

Dial

Aluminum

White Coating

Pointer

Aluminum

Black Coating

Type

DS-1081 (Rimless Type)

DS-1082 (Surface Type)

DS-1083 (Flush Mounting Type)

DS-1084 (Panel attachment Type)

Process connection

100mm : 1/4", 3/8", 1/2" PT & NPT, PF

150mm : 1/4", 3/8", 1/2" PT & NPT, PF

* Female 1/4" PT & NPT, PF

Option

Bracket

Accessories

Pressure Gauge

Accessories

Thermometer

Thermocouple
& R.T.D

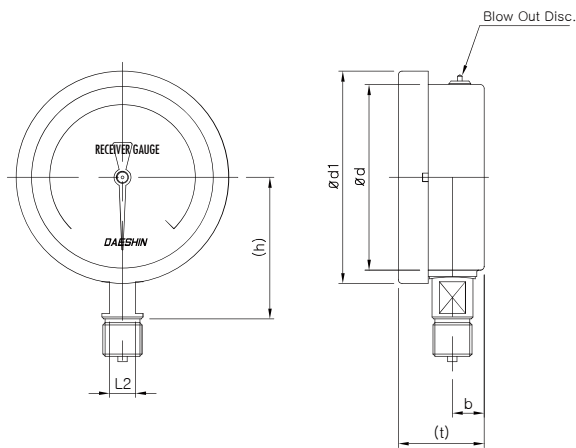
Thermowell

Receiver Gauge

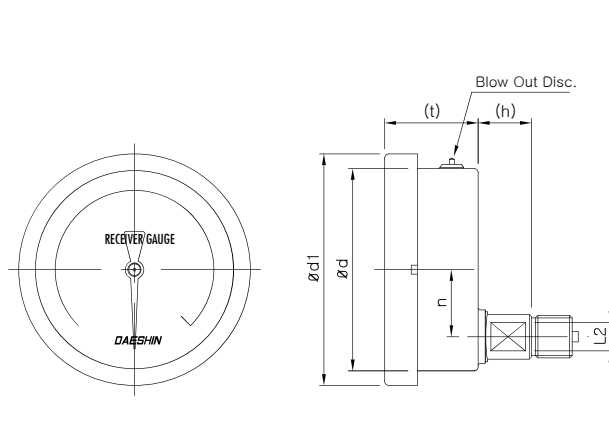
Model. DS-1080 Series

DAESHIN

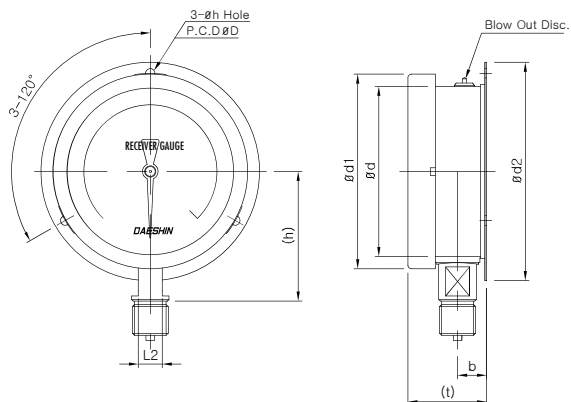
외형도



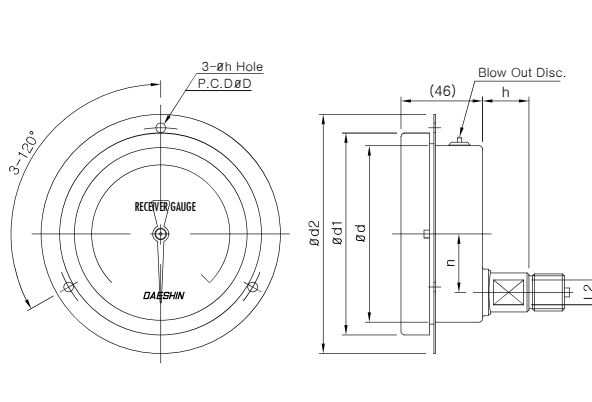
Model. DS-1081



Model. DS-1083



Model. DS-1082



Model. DS-1084

표준사양

Dimensions (mm)

Dial	Model No.	$\varnothing d$	$\varnothing d1$	$\varnothing d2$	b	n	t	L2	h	$\varnothing h$	$\varnothing D$
100	DS-1081/1082	100	114	128	17	-	(46)	17	(76)	5.5	115
	DS-1083/1084			135	-	33			(26)		120
150	DS-1081/1082	152	168	188	17	-	(50)	17	(100)	5.5	174
	DS-1083/1084				-	33			(26)		

Pressure Gauge

Accessories

Thermometer

Thermocouple & R.T.D

Thermowell