

Pressure Gauge with Electric Contact

Model. DS-1060M Series

DAESHIN

Summary

DS-1060M Series는 압력계 내에 Micro Switch를 내장시킨 접점 압력계로서 Switch를 작동시켜 ON,OFF의 전기적 신호를 발생하는 구조이며, Buzzer, Bell, Pilot Lamp 등에 보내 경보를 나타냅니다.

Diameter

100,150 mm

Accuracy

100,150 mm : ± 1.5 of Full Scale

Scale Range

100,150 mm : -0.1 ~ 0 Mpa, -0.1 ~ 2 Mpa, 0 ~ 100Mpa

Working Pressure

정압력 : 75% of Full Scale

변동압력 : 60% of Full Scale

Working Temperature

기체 : -20 ~ 65°C

유체 : -20 ~ 80°C



Model. DS-1062M

Pressure Gauge

Accessories

Thermometer

Thermocouple & R.T.D

Thermowell

Standard features

Pressure connection

STS 316

Element

STS 304, STS 316

C Type Bourdon Tube

Case,Cover

Aluminum (Hammer Tone Coating)

Window

General Glass

Safety Glass

Movement

STS 304

Dial

Aluminum

White Coating

Pointer

Aluminum

Black Coating

Type

DS-1062M (Surface Type)

DS-1064M (Panel attachment Type)

Process connection

100mm : 3/8",1/2" PT & NPT, PF

150mm : 3/8",1/2" PT & NPT, PF

Contact Rating

AC 125V 5A / 250V 3A

Contact Type

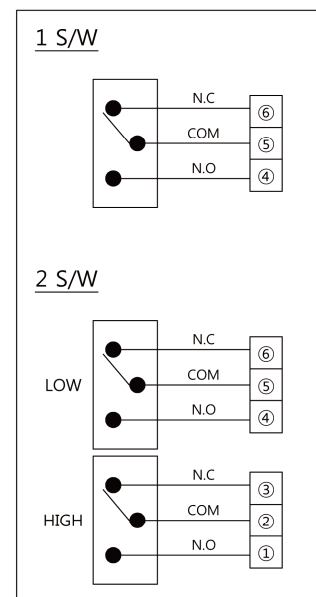
High and Low 2 Contact
(High or Low, High & High,
High & Low, Low & Low)

Option

Bracket

Accessories

Connection Diagram

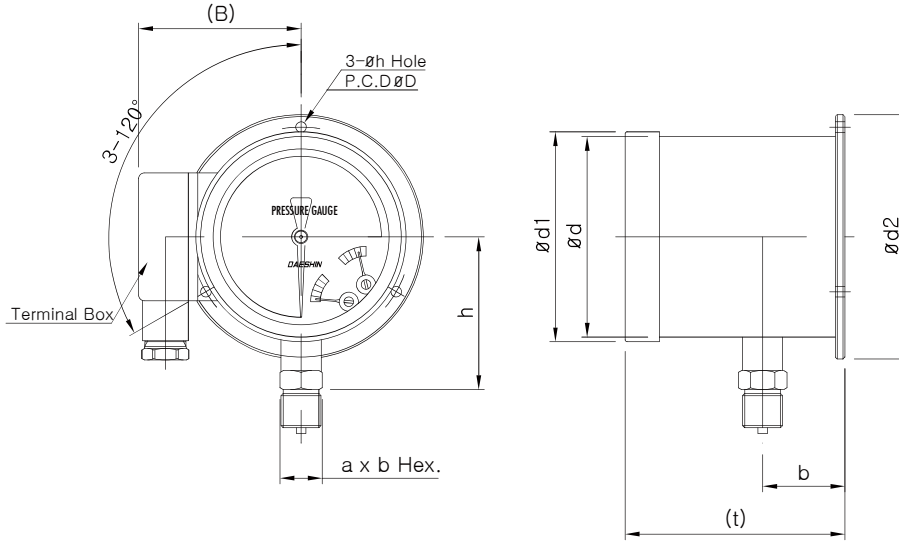


Pressure Gauge with Electric Contact

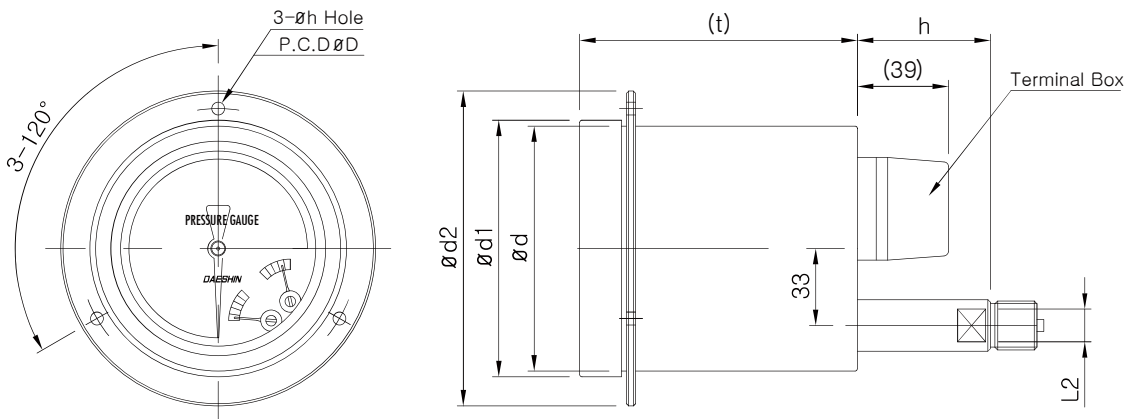
Model. DS-1060M Series

DAESHIN

외형도



Model. DS-1062M



Model. DS-1064M

표준사양

Dimensions (mm)

Dial	Model No.	Ød	Ød1	Ød2	b	n	B	t	L2	a x b	h	Øh	ØD
100	DS-1062M	105	110	128	43	-	85	(115)	22	-	(80)	5.5	115
	DS-1064M			135	-	33	39		-	22x25.4	(58)		
150	DS-1062M	156	170	190	43	-	116	(115)	17	-	(128)	5.5	174
	DS-1064M			200	-	33	39		-	22x25.4	(58)		185

Pressure Gauge

Accessories

Thermometer

Thermocouple & R.T.D

Thermowell